



# mantra

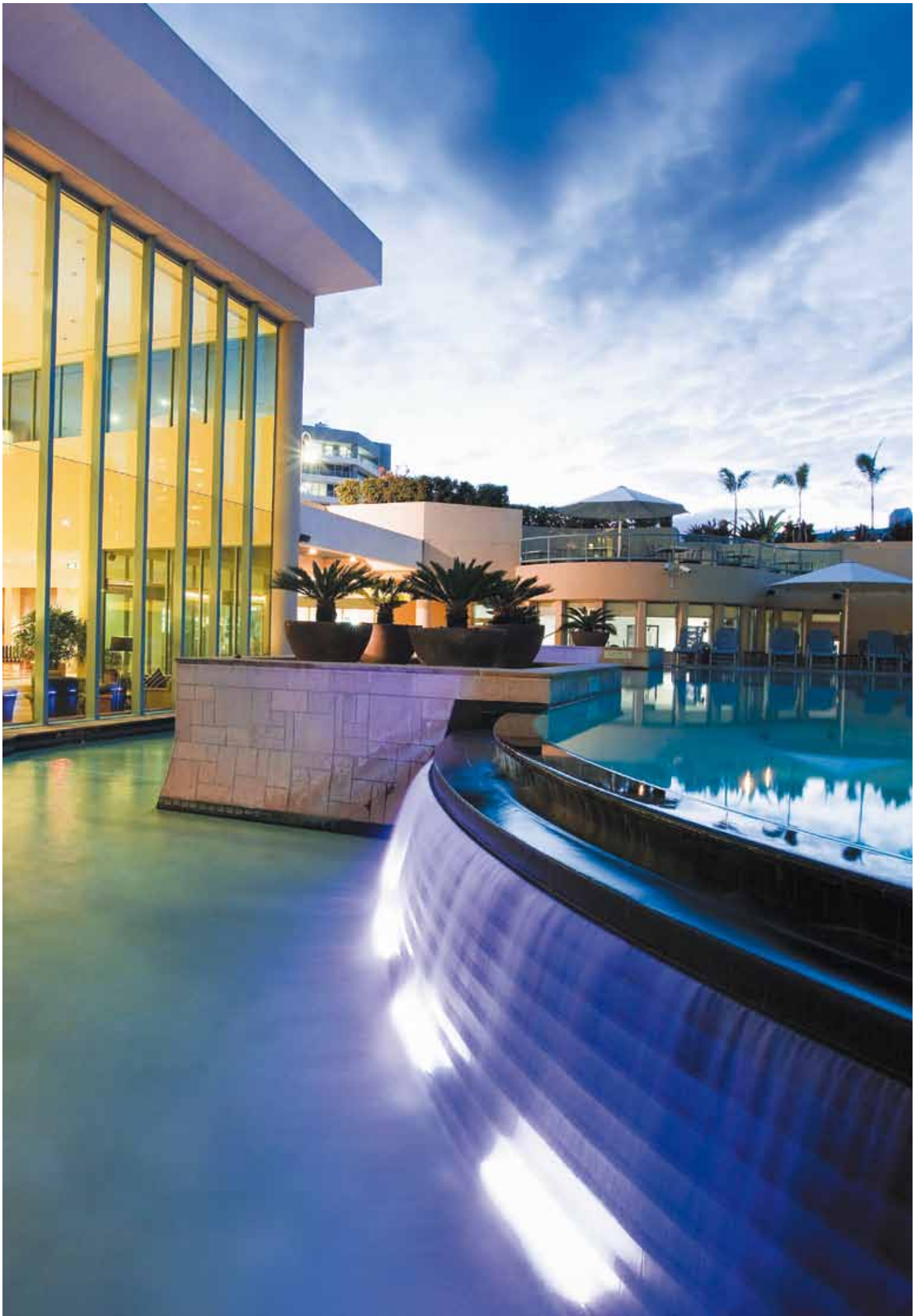
legends hotel

*I will hold a stylish  
& sophisticated event*



## Conferences & Events

Mantra Legends Hotel  
Cnr Surfers Paradise Blvd  
& Laycock St  
Surfers Paradise QLD 4217



# mantra

legends hotel



Mantra Legends Hotel offers friendly service, fabulous facilities & a mouth watering menu to satisfy the most discerning delegate.

There is every opportunity to relax, unwind & rejuvenate with an extensive range of facilities and services including Fables Restaurant & Tales Bar, an outdoor heated swimming pool, gymnasium, steam room and Swedish-style sauna.

Our conference and events team allows you to tailor a function to your personal style and taste while working within a budget. Dedicated events co-ordinators and professional food and beverage personnel will ensure nothing is left to chance in creating a successful event.

For delegates visiting from out of town, the hotel offers spacious, affordable accommodation. Special guest rates are available on request.

All of these attributes are enhanced by Mantra Legends Hotel's prime location, conveniently located 100m from the beach.



Mantra Legends Hotel will ensure nothing is left to chance with a dedicated conference and events team on hand plus multiple function areas to choose from and fabulous dining options.



Mantra Legends Hotel is located in the heart of Surfers Paradise with cafes, restaurants, nightlife and shopping at its doorstep.



### Facilities

conference facilities  
 gymnasium  
 outdoor pool & terrace  
 24 hour reception  
 concierge  
 restaurant & bar  
 room service (limited)  
 steam room & sauna  
 tour desk  
 undercover parking (limited)  
 guest laundry

### Room features

air conditioning  
 cable TV  
 in-house movies  
 wireless internet  
 mini bar  
 tea & coffee making facilities  
 balcony  
 in room safe  
 iron & ironing board  
 hair dryer

### Dining

Fables Restaurant is open seven days for Breakfast & Dinner, and offers:

- Buffet Breakfast featuring an extensive selection of hot and cold dishes
- Seafood Buffet Dinner with International cuisine and a full a la carte menu
- Room Service
- Private function room and outdoor terrace to host your own exclusive party or corporate function

Tales Bar is a relaxed lounge bar with stylish surrounds offering:

- A variety of Australian and International beverages
- Large plasma screen
- Extensive cocktail list



Ideal for a relaxing getaway, family holiday or business trip to the Gold Coast, Mantra Legends Hotel offers premium accommodation in a prime location.

Accommodation options range from hotel rooms to deluxe suites, all with stylish décor and a full range of services to make you feel at home whether you are travelling for business or pleasure.



### Hotel Twin Room

The Hotel Twin Room features 2 double beds and is approximately 29.4m<sup>2</sup> in size.

### Studio Room

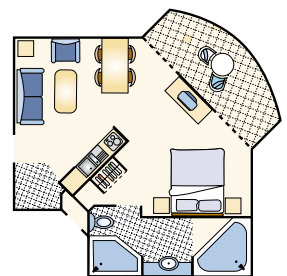
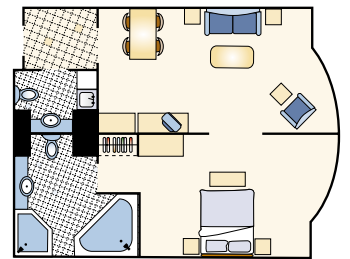
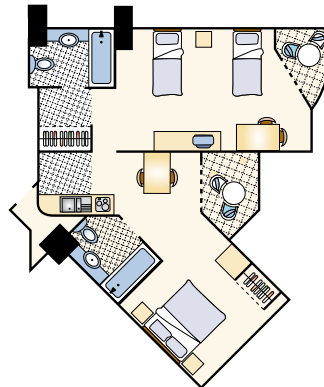
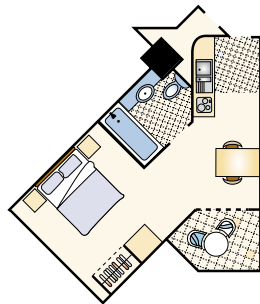
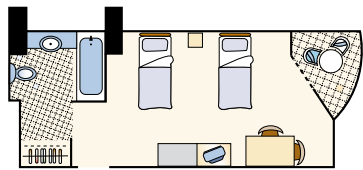
The Studio Room with kitchenette features 1 King (zip) and is approximately 34m<sup>2</sup> in size.

### Interconnecting Room

The Interconnecting Room consists of a Studio Room and a Hotel Twin Room with an interconnecting door.

### Spa Suite

The Spa Suite with kitchenette features 1 king & 1 sofa bed and is approximately between 46m<sup>2</sup> & 59m<sup>2</sup>.



\*Floor plans shown are indicative only and may vary per room.



Located 100m from golden beaches and central Surfers Paradise, Mantra Legends Hotel is the ideal venue for a productive conference or successful event.

### Pre-Function Area

Located on level one, this area can be accessed via a lift or grand staircase from the lobby and has direct access to all function spaces. With modern lounges and stylish décor, the Pre Function Area is suitable for breakouts, trade displays & cocktail functions.

### Ballroom

Situated at the rear of the Pre Function Area on level one, the pillar-less Ballroom features natural light at the northern end, dual drop down screens and ceiling mounted data projectors facing east or a singular drop down screen & data projector facing north. It also can be divided into two or three individual function rooms should a smaller room or additional breakouts be required.

### Executive Boardroom

Located to the left hand side of the Pre Function Area on level one, the Executive Boardroom has natural light, features a wall mounted plasma screen & DVD player and direct access on to the outdoor terrace.

### Meeting Rooms

Are located to the right hand side of the Pre Function Area on level one and are ideal for smaller groups; they can be used as one room or divided into two smaller individual rooms should you require additional breakout rooms.

### Undercover Terrace

Is located off the Pre Function Area on level one. This area overlooks the Hotel Pool and is suitable for cocktail & dinner functions and can be utilised as the wet weather backup for functions booked on the Garden Terrace.

### Garden Terrace

Is located on level one and is an ideal venue for an outdoor dinner, cocktail party or wedding ceremony; alternatively used during the day for a breakout space for conferencing or team building.

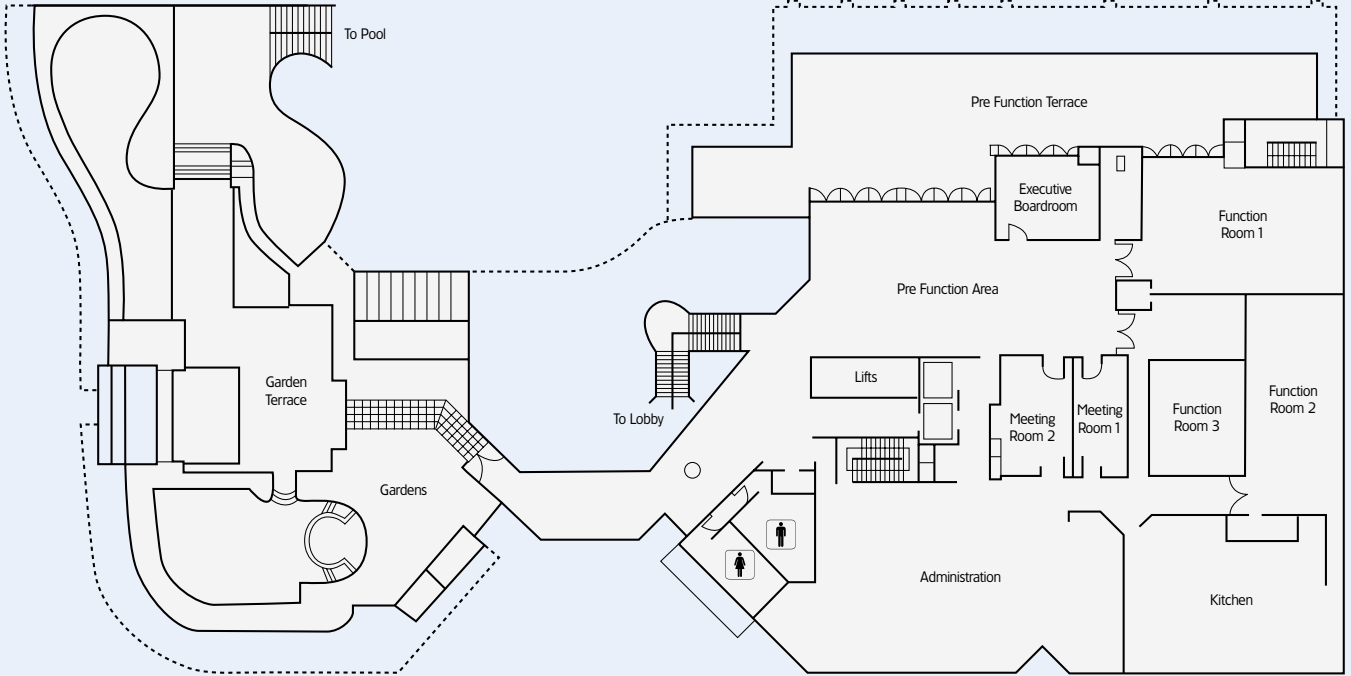
### Private Dining Room

Located on the ground level in the back of Fables Restaurant, with French doors, natural light and a private outdoor terrace. This function room is suitable for intimate dinners, lunches & weddings.

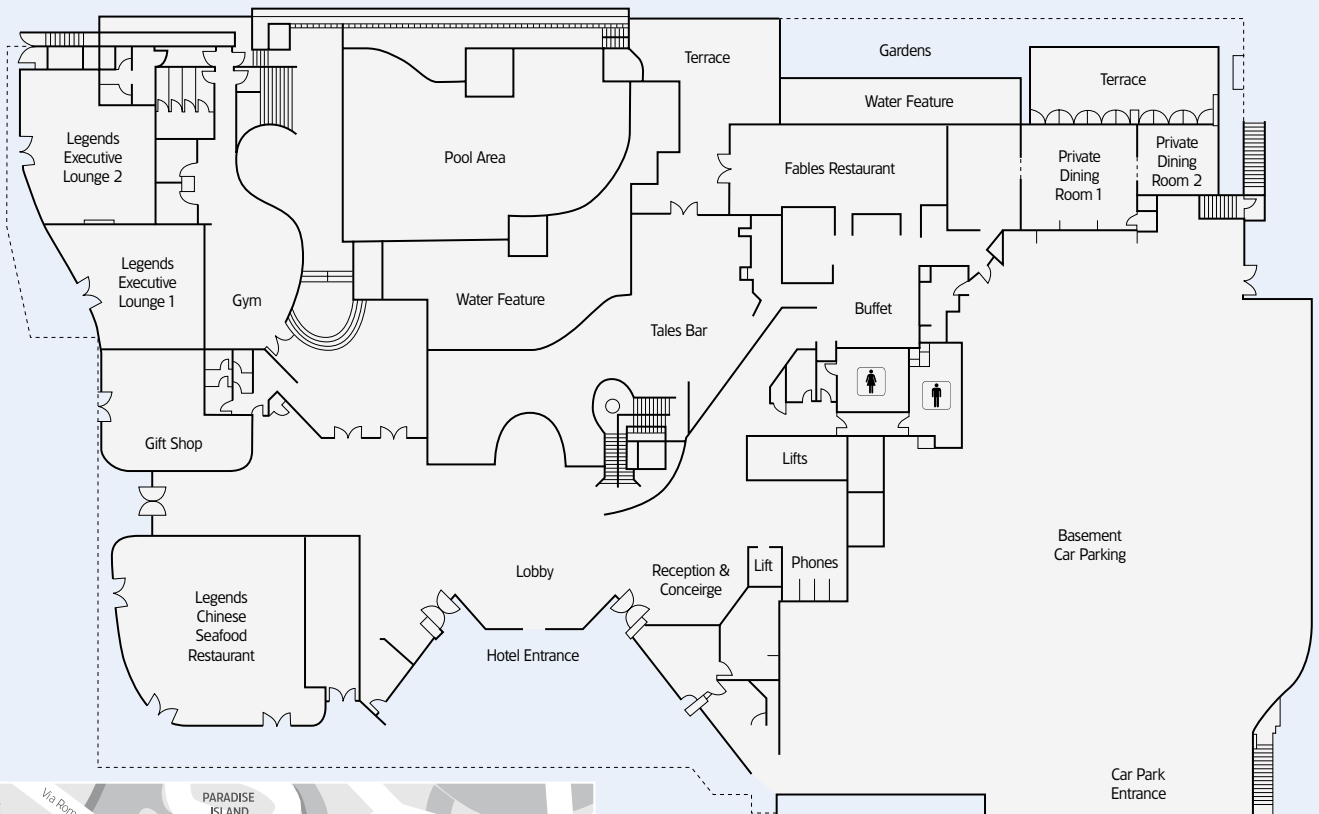
## Function Rooms & Capacities

Room	Ceiling Height (m)	Area (m <sup>2</sup> )	Dimensions (m)	Boardroom	Cocktail	U-Shape	Banquet	Classroom	Theatre
Ballroom (Function Rooms 1,2,3)	3.5 & 4.5	268	19.5x13.75	70	400	75	220	170	300
Function Room 1	3.5 & 4.5	141	13.9x8.36	150	33	70	60	100	100
Function Room 2	3.5 & 4.5	91	6.75x13.5	44	130	39	70	54	100
Function Room 2 & 3	3.5 & 4.5	175	12x13.75	68	200	45	100	90	160
Function Room 3	3.5 & 4.5	56	7x8	20	50	24	40	30	50
Meeting Rooms 1 & 2	3.5	52	9.2x5.7	26	70	24	30	24	45
Meeting Room 1	3.5	23	4.1x5.7	12	30	5	n/a	12	18
Meeting Room 2	3.5	27	4.9x5.7	18	35	15	n/a	15	25
Executive Boardroom	3.5	28	7x4	16	n/a	12	n/a	12	20
Private Dining Room 1	3.4	55	8.9x6.2	n/a	80	n/a	40	n/a	n/a
Private Dining Room 2	3.4	26	6.1x4.4	n/a	30	n/a	20	n/a	n/a
Garden Terrace	-	-	9x8 marquee	n/a	200	n/a	100	n/a	n/a
Pre-Function Terrace	-	-	-	n/a	250	n/a	200	n/a	n/a

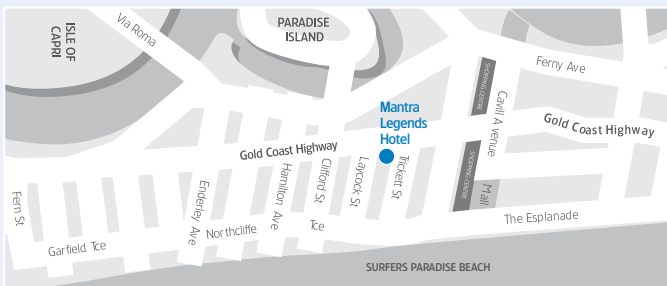
Please note these figures are the maximum room capacities excluding staging or audio visual equipment.



Level 1



Ground Floor





mantra  
legends hotel

Cnr Surfers Paradise Blvd & Laycock St  
PO Box 1587  
Surfers Paradise QLD 4217

Phone: 07 5588 7878

Fax: 07 5588 7887

Email: [conference@legendshotel.com.au](mailto:conference@legendshotel.com.au)

[www.mantralegendshotel.com.au](http://www.mantralegendshotel.com.au)